

## Step 1. Outer Shell Material Choices

Material	Oz	Prefix	Color – Circle color
<input type="checkbox"/> Indura® Cotton	9 Oz	IC	Navy, Black, Tan, Yellow, Red, Royal
<input type="checkbox"/> Indura® Ultrasoft Twill	9 Oz	US	Navy, Black, Tan, Yellow, Red, Royal
<input type="checkbox"/> PBO® Millenia Lite®	5.3 Oz	13	Bronze
<input type="checkbox"/> Nomex® Defender® 600 RS	6 Oz	21	Black, Red, Yellow, Tan, Navy, Royal Blue, Natural
<input type="checkbox"/> TriGuard™ 590	5.3 Oz	46	Bronze, Tan, Navy (Cobalt Blue), Royal Blue, Yellow, Orange, Green (Spruce), Red

## Step 2. Garment Choices – Standard Features

Garment Type	Standard Features
<input type="checkbox"/> BDU Shirt	Hook and Loop Wrist and Neck Closures, Snap Front Closure, Replaceable Chinstrap, BiSwing Back, Forward Flex Sleeves
<input type="checkbox"/> BDU Pants	Full Range of Motion Crotch Design, 7 Belt Loops, Zipper/Snap Closure, Front Slash Pockets
<input type="checkbox"/> Jumpsuit	Hook and Loop Wrist and Neck Closures, 2-way Hidden Zipper, Hook and Loop Take-up Straps at Waist with Elastic in Back, Full Range of Motion Crotch Design, Forward Flex Sleeves, Pass-through Front Slash Pockets, Replaceable Chinstrap

## Step 3. BDU Shirt Option Choices – Specify Placement and Orientation on Diagrams

- 1-way Zipper with Mini-storm Shield Closure in Place of Snaps
- 2-way Zipper with Mini-storm Shield Closure in Place of Snaps
- Side Slits
- Epaulettes

### Reinforced Elbows (6" w x 8.5" h)

- Reinforced with Outer Shell Material –  Padding Additional
- Reinforced with Arashield –  Padding Additional

### Pockets (Specify Location and Angle on Diagram)

- Cell Phone Pouch – 4" h x 3" w
- Knife Pouch – 4" w x 1.5" h
- Slant Zippered Pocket with Hidden Zipper – 10" h x 9" w
- Vertical Zippered Slot Pocket:  6" h x 2" w  6" h x 4" w
- Notebook Pocket – 6" h x 6" w
- Notebook Pocket with Separate 1" pencil slot – 6" h x 7" w
- Patch Pockets:  6" h x 6" w  8" h x 6" w  10" h x 6" w

### Patch Pocket Add-on:

- Equipment Dividers – 3 Dividers with 4 Slots Standard

### Cargo Pockets:

- 6" h x 6" w x 1.5" d  8" h x 6" w x 1.5" d
- 10" h x 6" w x 1.5" d

### Cargo Pocket Add-ons (Inside the Cargo Pocket)

- Internal Storage Pocket with Flap – 4" h x 2.5" w
- Internal Storage Pocket without Flap – 5" h x 6" w
- Tool Divider
- Bottom of Cargo Pocket Sewn Flat

### Trim – Located at Sleeve Cuffs and Upper Back

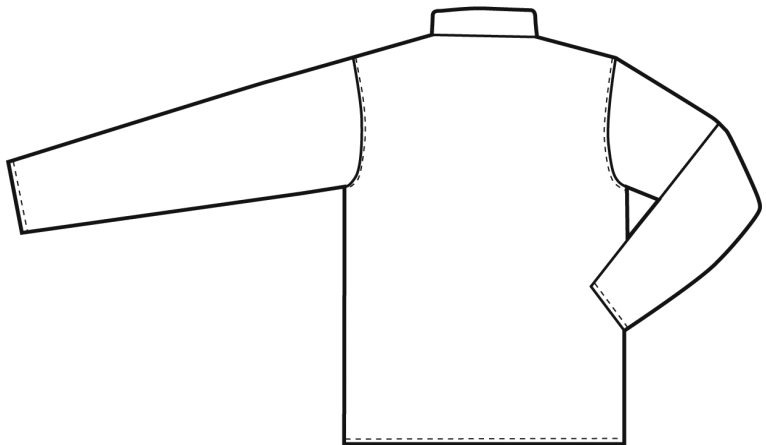
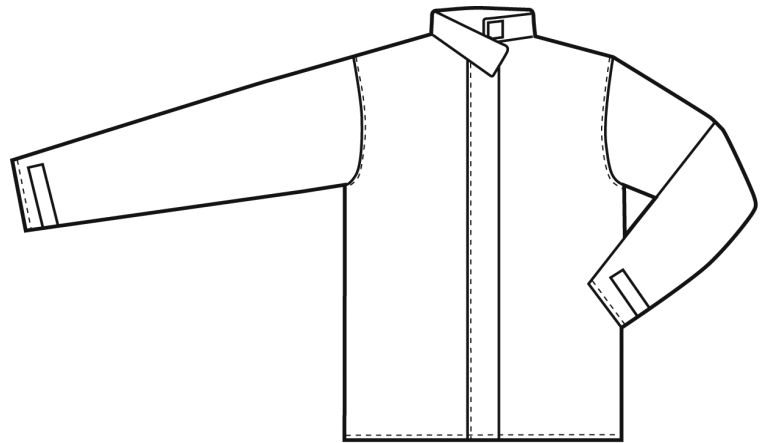
- Lime Two Tone 3M™ Scotchlite™
- Orange Two Tone 3M™ Scotchlite™
- Solid Orange 3M™ Scotchlite™
- Solid Lime 3M™ Scotchlite™
- Solid Silver 3M™ Scotchlite™

### Lettering – Sewn to Patch (Specify Lettering on Diagram)

- 2" or  3" Lettering Lime 3M™ Scotchlite™
- 2" or  3" Lettering Orange 3M™ Scotchlite™
- 2" or  3" Lettering Silver 3M™ Scotchlite™

### Lettering Patch – Application Options

- Sewn-on Patch  Hook and Loop Patch
- 3" Reflective Maltese Cross  6" Reflective Maltese Cross Applied to a Patch
- 3" Reflective Star of Life  6" Reflective Star of Life Applied to a Patch



### STEP 4. BDU PANT OPTION CHOICES – Specify Placement and Orientation on Diagrams

#### Knees – 7" w x 8.5" h

- Reinforced with Outer Shell Material – Sewn on
  - Padding Additional
  - Pocket and Silicone Insert (Cannot have Side Seam Pockets Longer or Wider than 6" with this Option)
- Reinforced with Arasheid – Sewn on
  - Padding Additional
  - Pocket and Silicone Insert (Cannot have Side Seam Pockets Longer or Wider than 6" with this Option)
- BiFlex with Outer Shell Material –  Sewn on  Replaceable  
(Cannot have Side Seam Pockets Longer or Wider than 6" with this Option)
- BiFlex Outer Shell and Arasheid Center –  Sewn on  Replaceable  
(Cannot have Side Seam Pockets Longer or Wider than 6" with this Option)

- Postman Slide Take-up Straps** in Place of Belt Loops
- Reinforced Seat**
- External Harness Loops for Class 2 Harness** (Must Delete Belt Loops)  
No Pockets on Rear of Pant
- Hook and Loop Cuff Closure**

#### Pockets – (Specify Location and Angle on Diagram)

- Cell Phone Pouch – 4" h x 3" w
- Knife Pouch – 4" h x 1.5" w
- Vertical Zippered Slot Pocket – 6" h x 2" w
- Vertical Zippered Slot Pocket – 6" h x 4" w
- Notebook Pocket – 6" h x 6" w
- Notebook Pocket with 1" Pencil Slot – 6" h x 7" w
- Hip Pocket – 6" h x 6" w
- Expandable Hip Pocket – 6" h x 6" w
- Rear Slash Pockets – 8.5" h x 8" w  
Cannot have Side Seam Pockets with this Option

- Patch Pockets –  6" h x 6" w  8" h x 6" w  
 10" h x 6" w

#### Patch Pocket Add-ons:

- Equipment dividers – 3 Dividers with 4 Slots Standard

- Expandable Patch Pockets –  6" h x 6" w  8" h x 6" w  10" h x 6" w

#### Expandable Patch Pocket Add-ons:

- Equipment dividers – 3 Dividers with 4 Slots Standard

- Cargo Pocket w/flaps:  Regular  Contour

- 6" h x 6" w x 1.5" d  8" h x 6" w x 1.5" d

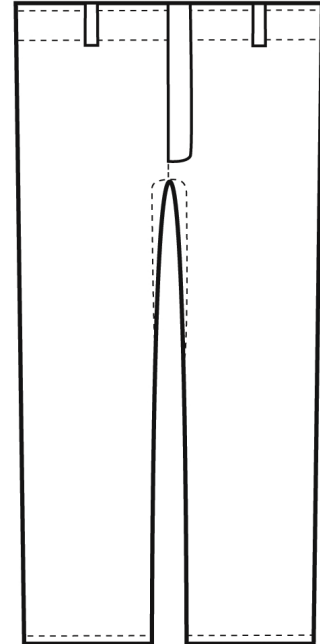
- 10" h x 6" w x 1.5" d

#### Cargo Pocket Add-ons:

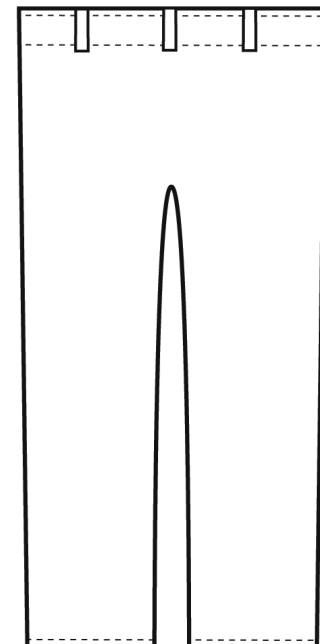
- Internal Storage Pocket with Flap – 4" h x 2.5" w
- Internal Storage Pocket without Flap – 5" h x 6" w
- Tool Dividers
- Holster Strap Under Cargo Pocket
- Bottom of Cargo Pocket Sewn Flat

#### Trim – Located at Bottom Cuffs

- Lime Two Tone 3M™ Scotchlite™
- Orange Two Tone 3M™ Scotchlite™
- Solid Orange 3M™ Scotchlite™
- Solid Lime 3M™ Scotchlite™
- Solid Silver 3M™ Scotchlite™



**BDU  
Pant  
Front**



**BDU  
Pant  
Back**

## SPECIFICATION WORKSHEET FOR NFPA 1951, 1977 and 1975 BDUs AND JUMPSUITS

### Step 5. Jumpsuit Option Choices – Specify Placement and Orientation on Diagrams

**Epaulettes**

**Reinforced Elbows** – 6" w x 8.5" h

- Reinforced with Outer Shell Material  Padding Additional
- Reinforced with Arashield  Padding Additional

**Reinforced Knees** – 7" w x 8.5" h

- Reinforced with Outer Shell Material – Sewn on
  - Padding Additional
  - Pocket and Silicone Insert (Cannot have Side Seam Pockets Longer or Wider than 6")
- Reinforced with Arasheild – Sewn on
  - Padding Additional
  - Pocket and Silicone Insert (Cannot have Side Seam Pockets Longer or Wider than 6")
- BiFlex with Outer Shell Material –  Sewn on  Replaceable (Cannot have Side Seam Pockets Longer or Wider than 6")
- BiFlex Outer Shell and Arashield Center –  Sewn on  Replaceable (Cannot have Side Seam Pockets Longer or Wider than 6")

**Reinforced Seat**

**Hook and Loop Leg Cuff Closure**

**External Harness Loops for Class 2 Harness**

**10" Boot Access Panels** -- No Pockets on Rear of Pant

**Pockets** (Specify Location and Angle on Diagram)

- Radio Pocket – 8" h x 3" w x 2" d
- Cell Phone Pouch – 4" h x 3" w
- Knife Pouch – 4" h x 1.5" w
- Slant Zippered Pocket with Hidden Zipper – 10" h x 9" w
- Vertical Zippered Slot Pocket –  6" h x 2" w  6" h x 4" w
- Notebook Pocket – 6" h x 6" w
- Notebook Pocket with 1" Pencil Slot – 6" h x 7" w
- Hip Pocket – 6" h x 6" w
- Expandable Hip Pocket – 6" h x 6" w
- Rear Slash Pockets – 8.5" h x 8" w – Cannot have Side Seam Pockets

Patch Pockets –  6" h x 6" w  8" h x 6" w  10" h x 6" w  
 Patch Pocket Add-ons:  Equipment Dividers – 3 Dividers with 4 Slots Standard

Expandable Patch Pockets –  6" h x 6" w

8" h x 6" w  10" h x 6" w

Expandable Patch Pocket Add-ons:

Equipment dividers – 3 Dividers with 4 Slots Standard

Cargo Pocket –  Regular  Contour

6" h x 6" w x 1.5" d  8" h x 6" w x 1.5" d

10" h x 6" w x 1.5" d

Cargo Pocket Add-ons (Inside the Cargo Pocket)

- Tool Dividers
- Internal Storage Pocket with Flap – 4" h x 2.5" w
- Internal Storage Pocket without Flap – 5" h x 6" w
- Holster Strap under Cargo Pocket
- Bottom of Cargo Pocket Sewn Flat

**Trim** – Located at Sleeve, Ankle Cuffs and Upper Back

- Lime Two Tone 3M™ Scotchlite™
- Orange Two Tone 3M™ Scotchlite™
- Solid Orange 3M™ Scotchlite™
- Solid Lime 3M™ Scotchlite™
- Solid Silver 3M™ Scotchlite™

**Lettering**  2" or  3" Lettering Lime 3M™ Scotchlite™

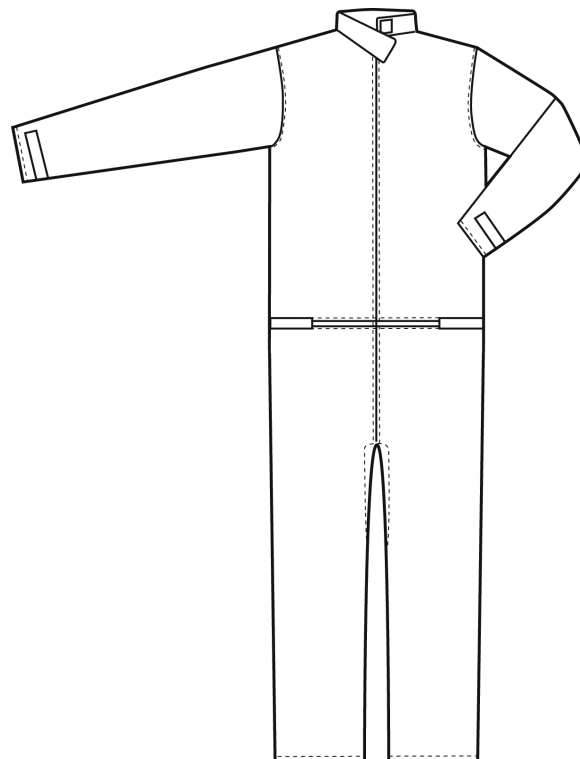
2" or  3" Lettering Orange 3M™ Scotchlite™

2" or  3" Lettering Silver 3M™ Scotchlite™

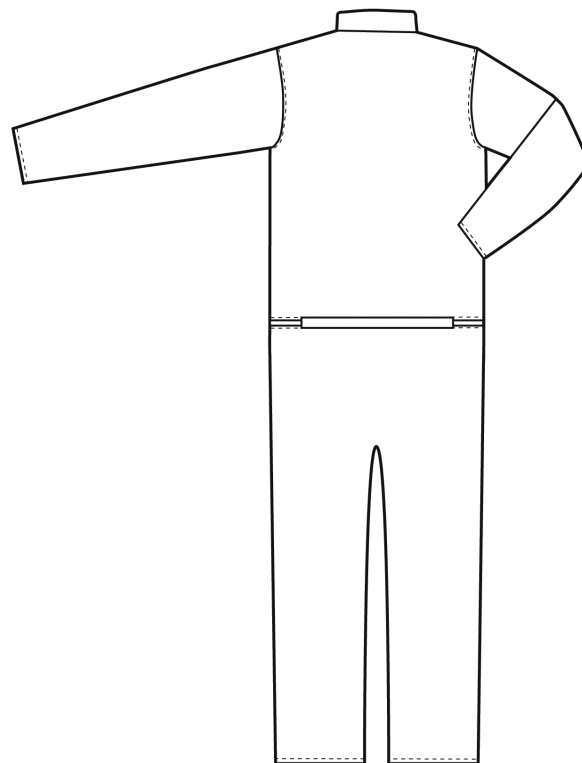
**Lettering Patch** – Application Options  Sewn-on Patch  Hook and Loop Patc

- 3" Reflective Maltese Cross  6" Reflective Maltese Cross Applied to a Patch
- 3" Reflective Star of Life  6" Reflective Star of Life Applied to a Patch

**Jumpsuit Front**



**Jumpsuit Back**



## SIZE SELECTION GUIDE FOR CLOTHING

This guide is a tool designed to assist you in obtaining the best-fitting garments for your customers. It also details procedures to be followed when fitting, measuring, and ordering jumpsuits. **It is important that all dealer personnel involved in the sale and fitting of jumpsuits, read and understand the information provided in this guide.**

### Ordering Garments

All orders must include the following: style, material, color, size by letter (ex: S, M, L, etc.), inseam length and Short/Regular/Tall (Vertical Circumference) for jumpsuits. The sizing information can be obtained using one of these two methods:

1. Use sizing garments (recommended) and adjust inseam, sleeve length or body type using a tape measure.
2. Use a tape measure and the instructions in this guide for all required measurements.

Sample Order Forms for each of the above methods are enclosed for your convenience.

### Sizing Garments – One Piece Jumpsuits

***Morning Pride strongly recommends the use of sizing garments for fitting ALL garments. Sets of Sizing Garments are available for purchase or on a “loaner” basis by contacting your American Firewear sales representative or Customer Service.***

Sizing garments dramatically reduce the number of “custom” garments ordered and have proven invaluable to most of our dealers. Most garments that have not fit as anticipated have been those that were ordered based upon tape measure dimensions, or – worse yet – the end-user’s estimate. Morning Pride is responsible for providing a manufactured garment consistent with the specified size and any required measurements for custom sleeve and/or inseams supplied to us. Distributor personnel who elect to use a tape measure to determine size assume responsibility for proper fit.

Sizing garments are made of gray fabric and do not include trim or exterior pockets. The 1-Piece sizing set of five Regular sizes, including M, L, XL, XXL, XXXL and is available for \$597.72. 1-Piece sizing garments have standard sleeve lengths and 30” inseam. The 2-Piece sizing set consists of four jackets and pants, including M, L, XL, XXL and is available for \$541.34. 2-Piece sizing garments have standard sleeve lengths and 29” inseam. Loaned garments are on a first-come, first-served basis, with the borrower paying the freight. Suits must be returned promptly and in good condition. Borrowed suits are invoiced with 30-day return privilege. If they are not returned during that period, payment is due.

Oversized sizing garments up to 6XL available upon request.

Incident Response jumpsuits fit differently than Wildland, EMS or Extrication.

EZ5000T has a separate size kit – specify jumpsuit style when ordering sizing set.

Tri-certified 2 piece and jumpsuits fit differently from the auxillary gear. Specify style of clothing when ordering sizing set.

Contact our Customer Service Department at 800-264-3333 or 800-688-6148 for more details.

### Required Measurements

If sizing garments are not used for fitting, or if any adjustments are made to standard jumpsuit dimensions (sleeve length and/or inseams), we will require a complete set of the eight key measurements described in the “Measurement Definition” section later in this guide.

Furthermore, **orders for these non-standard size jumpsuits are non-cancelable once cut.** Accurate sizing, as well as remedial actions required to correct problems associated with incorrect sizing, is the dealer’s responsibility. By signing the Purchase Order Confirmation that is faxed after order receipt, dealers acknowledge such responsibility.

Custom clothing is any garment with dimensions that vary from those of Standard Jumpsuits and 2-Piece Suits as shown in this Size Selection Guide. When use of a tape measure is necessary, **all** of the following key measurements **must be supplied on your order**. **Measurements should be taken snugly (taut, but not so tight as to apply pressure to the area being measured) over clothing similar to that which will be worn under the jumpsuit/2-piece clothing.**

**Do not add to or subtract from the actual measurement taken.**

- A Neck** – Measurement around center of neck
- B1 Chest** – Measurement around body at breast level while holding deep breath
- B2 Stomach** – Measurement around body beginning at the small of the back, around the greatest forward protrusion of the stomach, and returning to the starting point
- B3 Waist** – Measurement around body at point where street pants are normally belted

- C Seat** – While standing with legs together, measurement around body at greatest protrusion of the buttocks
- D Inseam** – Measure along inner side of pant leg from crotch seam to desired pant leg termination.
- E Sleeve** – With arm bent at a 90-degree angle, pointing forward in a “just-released-the-bowling-ball” manner, measured from the base of the neck, over the shoulder, down around elbow to cuff end
- F Vertical Circumference** – Vertical circumference is one continuous measurement of the length of the body torso. It is taken top-to-bottom, starting at the base of the collar on the back, running through the crotch (between the legs), up to the Adam’s apple on the front. **Note: Do not measure only the front or rear, doubling the measurement and do not measure front to crotch, back to crotch and add. Measurement must be one dimension.**

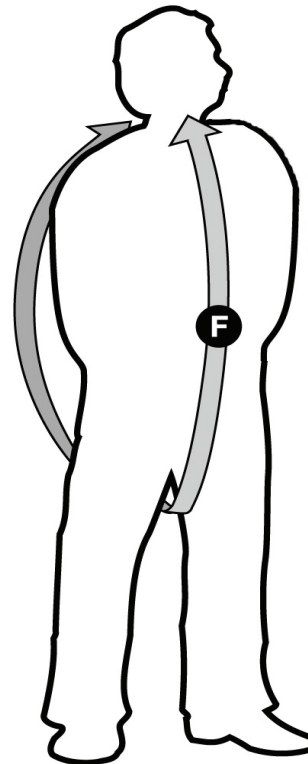
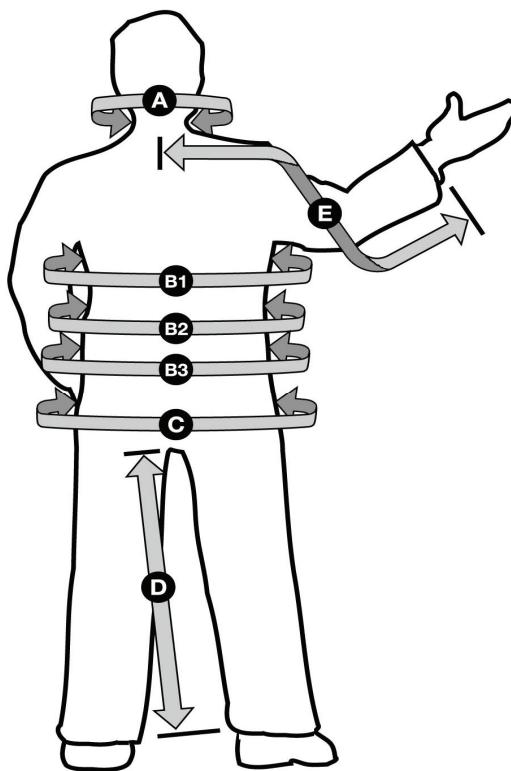
**Hip** – (Women or Men with large lower torso)  
Measurement around the fullest hip area.

**NOTE:** Jumpsuits and jackets/pants include hook and pile snuggers at both the wrists and cuffs, to allow blousing of the sleeves and legs for non-binding comfort. Do not allow for too much blousing, – it is better that sleeves and/or legs be slightly long than too short.

**MEASUREMENT POINTS – JUMPSUIT and 2-PIECE GEAR**

**Do not add to or subtract from the actual measurement taken.**

- A** A – Neck
- B1** B1 – Chest
- B2** B2 – Stomach
- B3** B3 – Waist
- C** C – Seat
- D** D – Inseam (Min. 25”)
- E** E – Sleeve
- F** F – Vertical Circumference (Only on Jumpsuits)



**F**  
**Measurement**  
**Not Required**  
**on 2-Piece**  
**Garments**

## SIZE SELECTION GUIDE FOR CLOTHING

### Standard 2-Piece Gear Information

2-Piece sizing samples should be used whenever possible.

If you must measure, be aware of the following points:

**Do not add to or subtract from the actual measurement taken. Do not use street clothing sizes.**

**A.** The size of the jacket you order should be the larger of the purchaser's CHEST (B1), STOMACH (B2), or WAIST (B3). **Do not assume – measure all three.** For female or male with a larger lower torso, use the Larger of the WAIST (B3) or HIP dimensions.

**B.** When ordering Pants, use the larger of the WAIST (B3) or HIP dimensions. This is particularly important when measuring a female or male with a large lower torso.

**Note:** Pants include rear elastic waistband and belt loops as standard.

The following Dimensional Charts detail approximate 2-piece gear dimensions. With these charts and your measurements, you should be able to determine the appropriate size to order. For assistance, you may contact Customer Service Department at 800-264-3333 or 800-688-6148.

All numbers are in INCHES.

### Jackets

Largest of the Chest, Stomach or Waist	36	38	40	42	44	46	48	50	52	54	56	58	60	62	64	66
Garment Size	<b>S</b>		<b>M</b>		<b>L</b>		<b>XL</b>		<b>2XL</b>		<b>3XL</b>		<b>4XL</b>		<b>5XL</b>	
Standard Sleeve Length	31½		32½		33½		34½		35½		36½		37½		38½	

### PANTS

Largest of Waist and Hips	30	32	34	36	38	40	42	44	46	48	50	52	54	56	58	60
Garment Size	<b>S</b>		<b>M</b>		<b>L</b>		<b>XL</b>		<b>2XL</b>		<b>3XL</b>		<b>4XL</b>		<b>5XL</b>	
Standard Inseams	← 29" →															
Additional Inseams	← 25" -- 36" →															

**No Additional Charges for Custom Sizing and Oversizes**

## SIZE SELECTION GUIDE FOR CLOTHING

### Standard Jumpsuits

Jumpsuit sizing samples should be used whenever possible. If you must measure, be aware of the following points:

**Do not add to or subtract from the actual measurement taken.**

- A.** The size of the garment you order should be the larger of the purchaser's CHEST (B1), STOMACH (B2), or WAIST (B3).  
Do not assume - measure all three.
- B.** The Vertical Circumference measurement is the one that will tell you if a "Tall" or a "Short" garment is appropriate.  
You may also wish to measure Vertical Circumference and check it against the Dimensional Chart (below) when sizing suits are used if there is a question as to which body type to order.

The following Dimensional Chart details approximate jumpsuit dimensions. With this chart and your measurements, you should be able to determine the appropriate size to order. For assistance, you may contact our Customer Service Department at (800) 264-3333. All numbers are in INCHES.

Largest of the Chest, Stomach or Waist	32	34	36	38	40	42	44	46	48	50	52	54	56	58	60	62
Garment Size	<b>S</b>		<b>M</b>		<b>L</b>		<b>XL</b>		<b>2XL</b>		<b>3XL</b>		<b>4XL</b>		<b>5XL</b>	
Standard Sleeve Length	32		33		34		35		36		37		38		39	
Standard Inseams Available	28 / 30		28 / 30 / 32						30 / 32							
Vertical Circumference (Short)	61½ -- 63½		69 -- 71		71½ -- 73½		74 -- 76		76½ -- 78½		79 -- 81		81½ -- 83½		84 -- 86	
Vertical Circumference (Regular)	63½ -- 65½		71 -- 73		73½ -- 75½		76 -- 78		78½ -- 80½		81 -- 83		83½ -- 85½		86 -- 88	
Vertical Circumference (Tall)	65½ -- 67½		73 -- 75		75½ -- 77½		78 -- 80		80½ -- 82½		83 -- 85		85½ -- 87½		88 -- 90	

**No Additional Charges for Custom Sizing and Oversizes**

**MEASUREMENT POINTS – JUMPSUITS**

**Do not add to or subtract from the actual**

